

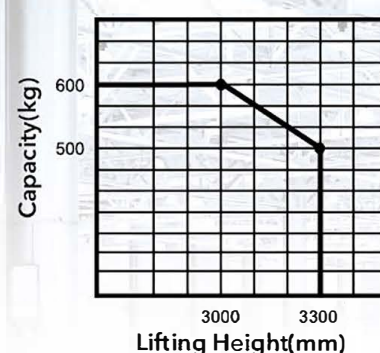
HELI
 LIFTING THE FUTURE

24 YEARS

 TOP1 FORKLIFT MANUFACTURER AND SALER
 IN CHINA FOR CONSECUTIVE 24 YEARS

CDD06-970
0.6 Ton Electric Stacker

Lifting Height: 1400-3300mm

Load Curve

Advantages
Configuration and Performance

- Short wheelbase and more flexible.
- Electronic power steering system, light and low noise.
- Two-way magnetic valve, three drop speed mode.
- AC Driving system, No carbon brush, Free maintenance.
- USA CURTIS driving controller.
- Electromagnetic, regenerative braking system.
- Automatic lifting limit, proximity switch, long life.

Safety

- Curve automatic deceleration devices, more safe.
- Vehicle decelerates automatically at higher position.
- Stepless speed control system, safe and quiet.
- Controller with Multiple automatic protection.
- Emergency reversing device/Emergency brake switch.


AC | EPS
Down mode at 3 speeds
Steering automatic deceleration
Mini counter-balanced electric stacker

Type	Lift height (mm)	Mast type	Outside width between legs (mm)	Inside width between legs (mm)
CDD06-970	1400/2000/2500/3000/3300	Standard 2-STAGE	200-660	0-460

HELI CDD06-970

Feature		
Model		CDD06
Configuration No.		970
Type		Counterbalanced
Mast type		Standard 2-Stage
Load capacity	kg	600
Load center	mm	500
Wheel base	mm	794
Operating type		Walkie/Stand On
Wheels		
Wheels type		PU
Wheel quantity Driving wheel/Balance wheel/Bearing wheel		1/0/2
Dimension		
Standard lift height	mm	1400/2000/2500/3000/3300
Max. extend height	mm	2400/3000/3500/4000/4300
Mast lowered height	mm	1230/1580/1780/2030/2130
Lowered fork height	mm	55
Fork size (length/width/thickness)	mm	1070/100/40
Overall length	mm	2240/2660
Overall width	mm	1015
Outside width between forks	mm	200-660
Inside width between forks	mm	0-460
Min. Turning radius	mm	971/1436
Min. Aisle width for pallets 800×1200	mm	2346/2822
Min. Aisle width for pallets 1000×1200	mm	2379/2844
Min. ground clearance	mm	80
Performance		
Travel speed, laden/unladen	km/h	5/5.5
Lift speed, laden/unladen	mm/s	130/230
Lowering speed, laden/unladen	mm/s	130/230
Gradeability, laden/unladen	%	5/7
Electrical configuration		
Drive motor/Lift motor/Steering motor	kW	AC1.5/DC3/DC0.15
Battery voltage	V	24
Battery capacity	Ah	270
Brake		Electromagnetic/Regenerative
Controller		CURTIS
Weight		
Battery weight	kg	245
Service weight with battery	kg	1770

* Details of specifications and equipment are based on information available at time of printing and may change without notice.

HELI
 LIFTING THE FUTURE

heliforklifts.co.nz

Contact us direct or get in touch with your local dealer

 0800 435 469
 sales@heliforklifts.co.nz